



► Approvals

- PCI PTS 2.xx
- PCI PA-DSS
- X509 Standard Public Key Infrastructure
- EMV Level II
- Interac
- PCI PIN Security Guidelines 2.0, Normative Annex A approved (Remote Key Injection Capability)
- RoHS compliant

► Security Features

- Application Signing
- Download System Signing
- POS System Signing
- Public Key Signing
- End-to-End Transaction Security
- Remote Key Injection

Look Up Inventory with Large Color Screen Barcode Reader

Starting right now, there's a revolutionary new line of high-performance, ergonomic and cost-effective customer-facing interactive terminals from Hypercom. Built on the Linux operating system, the L5000 family is the next generation of sleek, modular and expandable payment and advertising terminals specifically built for the multilane environment.

Hypercom's L5400 is a fully functional and flexible payment/advertising terminal that can be configured with unique hardware and communication options to allow it to be used for other in-store applications. With the addition of a barcode scanner, the L5400 ergonomic footprint and 18-bit (256K) color, full VGA (640 x 480 resolution) and large LCD display makes this the perfect device for in-store kiosk applications such as Product Price Checking or Product Locator.

Packaged in a small footprint and lightweight design, the L5400 device also supports interactive marketing programs and in-line advertising campaigns, including streaming or pre-loaded video clips. When configured without the barcode reader, the L5400 can also be used for standard payment applications with electronic signature capture or form presentation and signature acknowledgement applications such as Rental Agreements or Pharmacy Regulatory compliance.

A smart card reader can be integrated in an L5400 terminal, in lieu of a barcode reader. Also a contactless reader can be installed on an L5400, either as a factory or field installable option.

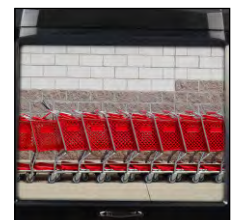
Hypercom's L5400 payment terminal features a 400 MHz, 32-bit processor for fast transactions. With its large capacity memory of 128MB standard (256MB optional) and a MicroSD memory expansion slot, the L5400 can securely accept new value-added applications to meet your needs now and in the future.



Barcode Reader



Optional Modular Contactless Reader



Large, 5.7" Color Screen Perfect for Advertising, Forms Presentations & Electronic Signature Capture

HIGH PERFORMANCE, CUSTOMER CONVENIENCE



L5400 Base Model



Optional Modular Contactless Reader

- Unique** ► Barcode reader options that include a liner reader or imager
- Display** ► Large LCD display at 18-bit (256K), full VGA (640 x 480 resolution)
- Platform** ► Built on the Linux operating system
- Small Footprint** ► Ergonomic design takes up less space on your counter or kiosk
- Fast** ► 400 MHz, 32-bit processor
- Flexible** ► Modular communications provide investment protection
- Secure** ► Designed to meet & exceed compliance requirements
- Application Integration** ► Proven FPE forms processing engine assures rapid integration and facilitates migration from existing L4xx products



L5400

HIGH PERFORMANCE, CUSTOMER CONVENIENCE

TECHNICAL SPECIFICATIONS

PROCESSOR

- 400 MHz, 32-bit processor
- Video decoder

AUDIO

- Audio speaker
- Audio jack

DISPLAY

- **Color:** VGA, 18-bit, 256K
- **Size:** 5.7" diagonal display, LCD
- **Resolution:** 640 x 480 pixels
- **Touch screen:** Integrated Capacitive glass

CARD READER

- **Magnetic stripe:** Standard, integrated, bi-directional encrypting head, reads Tracks 1, 2 & 3
- **Chip card reader:** Standard, modular EMV, non-captive; ISO 7816; 3V & 5V cards; 3 SAM sockets
- **Contactless payment:** Optional, modular contactless reader compliant with ISO 14443 A & B

COMMUNICATIONS

- **RS232:** One physical port and an internal port for peripherals
- **Powered USB:** Supports both standard client USB and Powered USB
- Ethernet
- USB Host
- Communication modules provide Barcode Reader, RS485/Tailgate, Power-over-Ethernet (POE), 2nd Ethernet port, BlueTooth or WiFi

SECURE PIN ENTRY

- Via virtual keypad on L5400 display or an attached PIN pad

MEMORY

- Standard: 128MB; expandable to 256MB
- MicroSD port for additional memory expansion

POWER

- **AC:** 100-240 V, 50/60 Hz
- **DC:** 12 V @ 700mA or 24 V @ 350mA

ENCRYPTION

- **TDES:** PCI PTS 2.xx approved; PIN-ANSI X9.8, MAC-ANSI X9.9
- **Triple DES:** ANSI X9.52
- **Key management:** Supports Master Session and DUKPT Schemas
- PCI PIN Security Guidelines 2.0, including Normative Annex A
- ANSI X9.24 Parts 1 & 2

DIMENSIONS

- **Without Contactless Reader:**
8.31" (l) x 7.09" (w) x 2.52" (h)
21.1 cm (l) x 18.0 cm (w) x 6.4 cm (h)
- **With Contactless Reader:**
10.6" (l) x 7.09" (w) x 3.78" (h)
25.8 cm (l) x 18.0 cm (w) x 9.6 cm (h)

WEIGHT

- **Without Contactless Reader:** 1.8 lbs / 0.82 kg
- **With Contactless Reader:** 2.0 lbs / 0.91 kg

ENVIRONMENT

- **Temperature:** 0-45°C/32-115°F
- **Humidity:** Max 85%, non-condensing

COMPLIANCE

- UL/cUL listed (UL60950-1)
- IC: 1204B-078270338 (RFID)
- FCC Part 15B, ICES-003, Class A
- CE, C-tick (Future Planned), CCC (Future Planned)
- **FCC ID:** NVA0708270338 (RFID)

Useable and Cost-Effective

- ▶ Robust, integrated capacitive glass touch screen provides high-performance signature capture, ensures value and reliability with the lowest maintenance and repair costs in the industry
- ▶ 5.7" diagonal VGA display allows for in-line advertising and interactive marketing campaigns in bright 18-bit (256K) color
- ▶ Optional contactless readers can be integrated for future growth
- ▶ Flexible communication options, including RS232, Powered USB and Ethernet, allows for easy integration with existing POS systems, reducing the time it takes to develop, test and certify a custom application
- ▶ Optional integrated barcode reader to support applications such as Price Checker or Product Locator kiosks
- ▶ Ability to interface with printers via either USB or a Bluetooth enabled communication module

Maximum Security, Extra Protection

- ▶ Meets industry standard security requirements from ANSI X509, FIPS 140-2 Level 3, Visa PCI PIN 2.0, Normative Annex A, Visa PCI-DSS, ANSI x9.24 Part 1 & 2 and TG-3 Guidelines
- ▶ With HyperSafe or other 3rd party systems, track data encryption can be easily be extended to provide a complete, end-to-end encryption
- ▶ An available feature with the L5400, the HyperSafe LockDown guards against unauthorized re-loads while the HyperSafe AppLock guards against malware attacks software tampering

Fast, High Performance

- ▶ Achieve faster product integration using Hypercom's Forms Processing Engine (FPE) software
- ▶ High performance 400 MHz processor ensures fast payment transaction processing, application and firmware downloads, and supports video
- ▶ Bi-directional, encrypting magnetic stripe reader comes standard

Modular Connectivity Options

- ▶ Standard communication options include RS232, USB (Client), Powered USB, USB-Host and Ethernet
- ▶ Field installable modules support RS485/Tailgate, Power-over-Ethernet, BlueTooth, WiFi, full-sized SDIO port or 2nd Ethernet port
- ▶ Modular configuration option available with an EMV Smart Card Reader or ergonomic Contactless Reader (i.e., field installable)

Terminal Estate Management Services

- ▶ Standard 3 year manufacturer warranty
- ▶ Additional service offerings include: Premier15, Premier7 and Premier1
- ▶ The PremierGreen Recycle Program enables retailers to discard obsolete payment terminals *Securely, Economically & in an Environmentally Safe* manner

© 2010 Hypercom Corporation, all rights reserved. Hypercom, the Hypercom logo are registered trademarks of Hypercom Corporation. All other products or services mentioned in this document are trademarks, service marks, registered trademarks or registered service marks of their respective owners. Product Specifications subject to change without notice. 940623-001, Rev A May 2010

OPTIONAL ACCESSORIES



HYPERCOM REMOTE KEY SYSTEM



HYPERSAFE END-TO-END ENCRYPTION SOLUTION
(First Data, Magtek & Voltage)



L5400 with Barcode Reader



SIGNATURE/CONTRACTS



CUSTOMIZABLE BEZEL
(To Match Your Marketing Brand)



WORLD HEADQUARTERS:

Hypercom Corporation

8888 E. Raintree Drive, Suite 300
Scottsdale, Arizona 85260 USA

Tel: +1.480.642.5000

Fax: +1.480.642.4655

Email: multilane@hypercom.com

www.hypercom.com